

Statewide Health Improvement Program (SHIP)

Minnesota Department of Health
Cara McNulty, M.S.

Initial Legislation and Plan

- ★ Legislation passed in 2007 called for creation of plan to fund and implement comprehensive statewide health improvement
- ★ Plan developed in consultation with State Community Health Services Advisory Committee (SCHSAC) and MDH Executive Office
- ★ Addresses risk factors for preventable deaths, decreased quality of life and financial costs from chronic diseases in four settings:
 - Community
 - Worksites
 - Schools
 - Health care
- ★ Incorporates expert knowledge from the state and local level
- ★ Based on Steps to a HealthierMN

Model for Statewide Health Improvement

- ★ Community input into planning, implementation and evaluation
- ★ Adherence to socio-ecological model
- ★ Health promotion in four settings: community, schools, worksites, health care
- ★ Local program advocates
- ★ Informed by evidence-based interventions
- ★ Focus on common risk factors
- ★ Extensive and comprehensive evaluation linked to program planning
- ★ Policy, systems, and environmental change that supports healthy behavior
- ★ Accountability and oversight

The Process - Fall 2007

- ★ MDH Executive Office and SCHSAC adopted plan Fall 2007
- ★ Plan presented to Governor's Health Care Transformation Task Force and legislative committees including Health Care Access Committee
- ★ Details of evidence, cost-effectiveness of prevention, and examples of state/local policies provided to committees
- ★ Governor's Task Force included plan in recommendations to Governor Pawlenty for health care reform
- ★ Plan introduced by legislature as part of broader health reform bill

The Process - Spring 2008

During 2008 Minnesota State Legislative Session:

- ★ Elements from Plan included in both House and Senate versions of health reform bill
- ★ Revised numerous times
- ★ Public health element remained throughout, but part of package that also includes:
 - Health care coverage/affordability
 - Chronic care management
 - Payment reform and price/quality transparency
 - Administrative efficiency
 - Health care cost containment

MDH Guiding Principles for Health Reform

- ★ Purpose of reform is to improve health of Minnesotans and redesign care to improve value (quality/costs).
- ★ We must “start with end in mind” and always remain focused on what we want to accomplish and what success looks like.
- ★ To ensure all Minnesotans benefit, we will aim for market-wide implementation of health reforms —not just reforms for government programs.
- ★ We will seek—and expect—unprecedented collaboration among public and private partners as we implement comprehensive health reform initiative.

Description of SHIP

- ★ Program intended to reduce obesity and tobacco use in Minnesota
- ★ \$47 million appropriated for SHIP for fiscal years 2010 and 2011
- ★ Competitive grants to Community Health Boards and tribal governments will be rolled out beginning July 1, 2009
- ★ SHIP funding will not supplant other funds

Description of SHIP

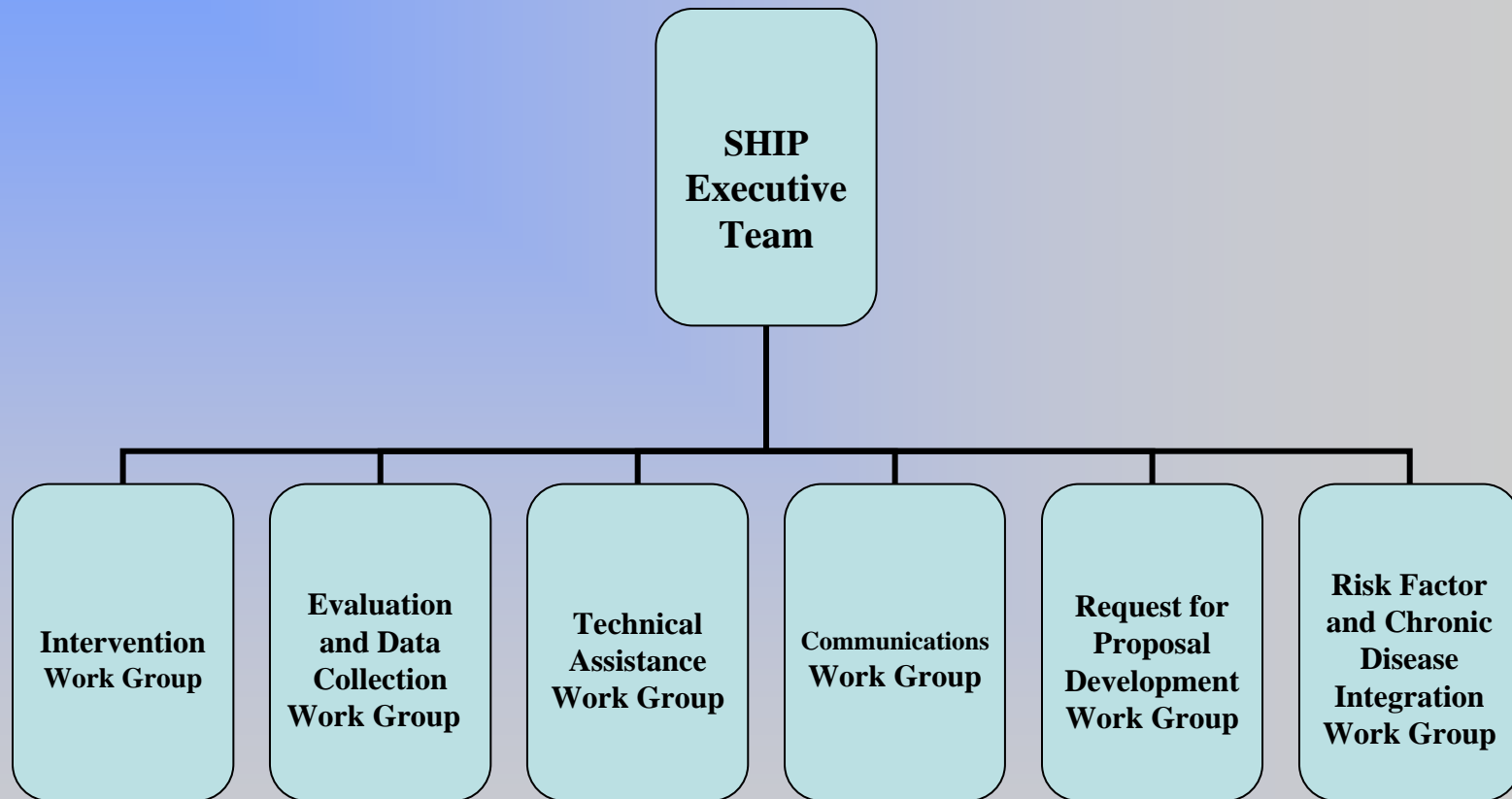
Communities and Tribal Governments required to:

- ★ Match 10% of funding
- ★ Submit community action plans, establish partnerships, and develop community leadership team
- ★ Develop policy, systems, and environmental changes in four settings
- ★ Work with MDH to evaluate programs

MDH will:

- ★ Set outcomes to support obesity and tobacco goals
- ★ Measure current status (baseline)
- ★ Provide content expertise, technical expertise, and training
- ★ Conduct comprehensive biennial evaluation
- ★ Provide biennial reports to legislature

SHIP Internal Structure



Currently, MDH is Planning for Implementation

★ Identifying:

- Existing local and state resources
- Internal/external stakeholders and partners role

★ Organizing/integrating internal structure and staffing

★ Meeting with key stakeholders

Currently, MDH is Planning for Implementation

- ★ Making decisions/gathering information on:
 - Terminology
 - Communications
 - Community assessment and reporting system (CHAAP and PPMRS)
 - Surveillance system
 - Evaluation
 - Funding
 - Implementation Toolkit

Next Steps

- ★ Work with internal/external partners
- ★ Hire additional staff from local public health
- ★ Develop:
 - Goals, objectives, outcomes
 - Core performance measures, process measures and linked evaluation
 - Implementation toolkit and other web tools Request for Proposals
- ★ Review proposals, select grantees, award funds
- ★ Implement program by July 1, 2009

Get Involved with SHIP

- ★ Local Public Health
- ★ Health Care Providers/Health Plans
- ★ Businesses
- ★ Schools
- ★ Community-based organizations
- ★ Content experts

Questions?

Contact Information:

Cara McNulty, MS

Statewide Health Improvement
Initiatives Manager

Cara.mcnulty@health.state.mn.us

(651) 201-5438

SHIP Website:

<http://www.health.state.mn.us/healthreform/ship.html>